



PRODUCTS 2.0

Pressure testing
Chlorination
Technology

Tools and equipment
PE accessories
Swabbing

A SELECTION OF OUR RANGE

www.twoH.net

INTRODUCTION

twoH is the UK's leading supplier of commissioning products to the pipeline industry for both hire and sales.

Our products have been designed and developed to exceed the capabilities of others and are extensively tested in real world conditions with our sister contracting company ExcelCS.

This brochure represents a small section of the range of products we supply.

For more info or to place an order you can phone us on **0845 230364** or e-mail sales@twoh.net or buy direct from our website www.twoh.net

twoH is the home of innovative technology Piped App and Tibiis Bluetooth logger.



UK Manufactured Products

Tibiis Log

SMART LOGGER



INDEPENDENT PRESSURE TESTING BLUETOOTH TECHNOLOGY

CONTENTS

- 4 Pressure Testing
- 6 Chlorination
- 8 PE Accessories
- 10 Swabbing
- 12 Sampling Essentials
- 14 Tools and Equipment
- 16 Fittings
- 18 PIPED
- 20 Training



PRESSURE TESTING

twoH's extensive range of ultra reliable and easy to use pressure test pumps are ideal for testing any diameter and any length of pipeline.

Pumps are available petrol or electric powered up to 500 LPM flow with pressures up to 200 bar.

Our app based QA system, Piped, calculates polyethene and solid pipe test results immediately.

An industry first fully automatic pressure test pumps.

IGN 4 1 03 and IGEM Compliant.



6 - 11 LPM



FEATURES

Distribution Mains

- 6 to 11 litres per minute.
- Pressures up to 200 bar.
- Adjustable pressure relief.
- Honda petrol engines.
- 110 volt.

30 - 120 LPM



FEATURES

Larger Distribution Mains - Smaller Trunk Mains

- 30 to 120 litres per minute.
- Pressures up to 40 bar.
- Adjustable pressure relief.
- Honda petrol engines.
- Wheeled for ease of movement.

220 - 500 LPM



FEATURES

Large Trunk Mains

- 220 to 500 litres per minute.
- Pressures up to 20 bar.
- Petrol Engines.
- Quick couplings.
- Suction fed.

Train with twoH - Our two day **EUSR** approved commissioning technician course covers all aspects of Pressure Testing & Chlorination

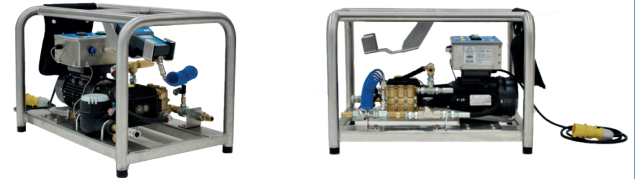
TIBIIS SMART LOGGER



FEATURES

- 0 to 700 mbar or 0 to 30 bar pressure logger.
- Pulse or 4 to 20 mbar flow sensor.
- Flow and pressure logger.
- Bluetooth Enabled.
- View in browser, smartphone or tablet.
- Rechargeable.
- Robust and water resistant.
- Enable for piped.

AUTOMATED TEST PUMP



FEATURES - TEST TYPES

- | | |
|----------------------------|------------------|
| • Fully Automated. | • PE Type 2. |
| • 6 or 12 ltrs per minute. | • Pressure Loss. |
| • 20 bar. | • Water Added. |
| • Durable SS frame. | • 10 minute. |
| • 110 volt. | |

Fully automatic pressure testing system, just enter your test pressure and press start it does the rest. All IGN compliant PE, DI, PVC etc instant results, Type 2, Pressure Loss, water Loss, 10 minute Test, one system does it all.

Early test intervention, air content, online data analysis, automatically generated test certs and on board calibration certificates. The complete pressure test solution.

CHLORINATION

twoH's chlorination units provide a reliable and robust solution for pipeline chlorination and chemical dosing.

Built to do the job efficiently, simply and reliably. Portable units are available manually adjustable or automatically flow adjusting.

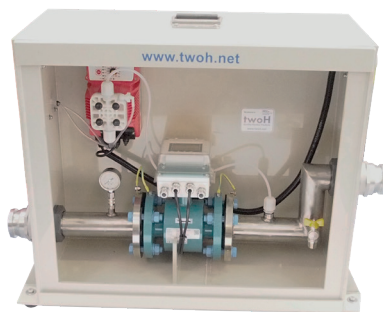
Trailer mounted units can achieve flows in excess of 5000 ltrs/min.

All our units are capable of 16 bar injection with most chemicals.

The higher flow units can be used to dechlorinate large volumes of potable water ideal for draining down a service reservoir or even to replace an out of action treatment plant.



FLOW PROPORTIONAL UNIT



FEATURES

- Chlorinate up to 1200 ltrs per minute at 20ppm.
- Magflow meter with instant digital readout.
- Flow proportional.
- 20 bar injection capacity.
- 110v or Battery Pack Powered.

STANDARD UNIT



FEATURES

- Chlorinate up to 1200 ltrs per minute at 20ppm.
- On board static mixer.
- Durable SS pipework.
- 20 bar injection capacity.
- 110v or Battery Pack Powered.

Train with twoH - Our two day **EUSR** approved commissioning technician course covers all aspects of Pressure Testing & Chlorination

HYDRODOSE MINI 5/5



FEATURES

- Chlorinate up to 550 ltrs per minute at 20ppm.
- Ideal for network flushing schemes.
- Connects onto standpipe or fire hose.
- 5 bar injection capacity.
- 110v or Battery Pack Powered.

DIRECT INJECTION UNIT



FEATURES

- Direct injection into pipework.
- 10 ltrs per hour chemical delivery.
- 10 bar delivery.
- 110v or Battery Pack Powered.
- Light and portable.

LIGHTWEIGHT DOSING TRAILER



FEATURES

- Chlorinate up to 1200 ltrs per minute at 20ppm.
- Magflow meter with instant digital readout.
- Flow proportional.
- 20 bar injection capacity.
- 110v or Battery Pack Powered.

HIGHFLOW DOSING TRAILER



FEATURES

- High Flow dosing trailer for the bigger jobs with larger flow rates.
- 100mm Stainless Steel pipework.
- Capable of dosing flows up to 5000 ltrs per minute or 80 ltrs per second.
- Fully flow proportional.
- Can be used to dechlorinate service reservoirs at 7.2ml in 24 hours.
- Enclosed working area.

PE ACCESSORIES

SECAUTER PE PIPE CUTTER



FEATURES

- Designed to quickly and precisely cut PE or PP pipe before mechanical jointing or electrofusion takes place.
- Three sizes are available small, medium and large.

PROFUSE PIPE EXPOSURE TOOL



FEATURES

- Designed to quickly and precisely remove the protective skin from high performance PE100 pipes before the electrofusion process takes place.
- It works with pipes from 63mm to 630mm in diameter.
- It has been designed to work with all makes of high performance PE pipe that have a polypropylene skin covering the outer surface.

PE HAND SCRAPER



FEATURES

- Designed to quickly scrape the surface of PE or PP pipe before the electrofusion process takes place.
- Works with all sizes of pipe but is most suited to small diameter service pipe.
- Available 1 ½ or 2 ½" wide.

HYDRAULIC SQUEEZE OFF



FEATURES

- Designed to restrict the flow of gas or water in a plastic pipe while a repair is carried out.
- They squeeze the pipe down to a set amount, as defined in the UK National Grid specification GIS/PL2-7. The pipe is squeezed shut by two parallel bars, the top bar being moved by a hydraulically operated jack.
- Tools are available in four different size ranges from 63mm up to 180mm.

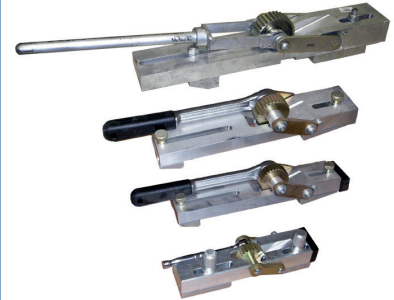
VARICLAMP UNIVERSAL



FEATURES

- These tools have been designed to restrain and align pipes before and during the electrofusion process.
- Other variations and sizes are available.

EXTERNAL DEBEADER



FEATURES

- Designed to remove the external bead from a butt-fusion welded joint.
- 125mm.
- 400mm.
- 500mm.
- 900mm.

SWABBING

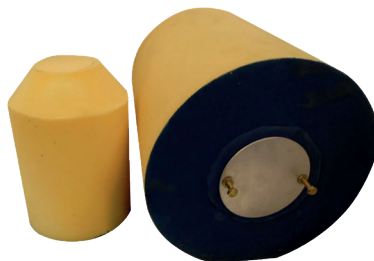
SOFT AQUA



FEATURES

- Coated drive plate
- Tapered nose
- 1.5 x diameter, density of 21-23kg/m³.
- Ideal for purging air from pipelines prior to pressure testing.
- Will remove light loose debris.
- Also suitable for drying and wiping of pipelines.
- Can be fitted with tow rope if required.

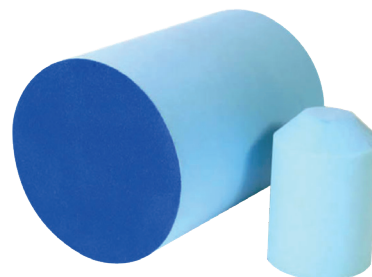
SOFT AQUA CAVITY



FEATURES

- For use with swab tracking sonde.
- Coated drive plate.
- Cavity diameter 25mm – 75mm.
- Tapered nose.
- Will also purge air, dry and wipe the pipelining.
- Will remove light loose debris.

MEDIUM AQUA



FEATURES

- Coated drive plate.
- Roped for swab tracking sonde connection.
- Tapered nose
- 1.5 x diameter, density of 26-30kg/m³.
- Increases density assists in debris removal and cleaning.
- Very effective as a drying swab.
- We can supply swabs for all sizes and applications eg. plastic bristles, wire bristles - please contact for advice.

10 BAR SWABBING PUMP



FEATURES

- Up to 10 bar pressure increase.
- Flow rate up to 560 ltrs/min.
- Reliable Honda engine.
- Easy to use - low maintenance.
- 2" Fire hose and suction rose inlet.
- Wheeled for ease of movement.

FILL AND SWABBING PUMP



FEATURES

- Swabbing pump.
- Up to 5 bar pressure delivery.
- Up to 500 ltrs per minute.
- Honda engine for reliability.
- 2-2½ hours run of full tank.
- Fire hose connection.

POTABLE WATER HOSE



FEATURES

- Potable water hose.
- Male and Female instantaneous Couplers.
- Standard lengths 3, 6, 10, 20 & 50m.
- Wire bound ends.
- 16 bar pressure rated.

SAMPLING ESSENTIALS

SODIUM HYPOCHLORITE



FEATURES

- Industry standard chlorination chemical.
- 15% strength.
- Available in 10 & 20 litre containers.
- Supplied with vented caps.

SODIUM BISULPHITE



FEATURES

- 23% strength.
- Available in 10 or 20 litre containers.
- Supplied with vented caps.

SPRAY CHLORINATION BOTTLE



FEATURES

- 1 litre capacity.
- Add one PR1000 Instachlor tablet to produce 1000 ppm (1000mg / litre).
- Sodium Hypochlorite safety label printed on bottle.
- For localized spray chlorination.

DPD REAGENTS



FEATURES

- Liquid reagents.
- Droplet squeeze bottles.
- High range 5 – 250 ppm.
- A & B Free 0 to 5 ppm.
- C Total 0 to 5 ppm.

DUAL RANGE CHLOROMETER



FEATURES

- Accurate chlorine measurement.
- Low range 0.01 to 5.00ppm.
- High range 5.0 to 250ppm.
- Light and portable.
- Digital accuracy – backlit for convenience.
- Choice of soft/zipped case or hard plastic case.

SAMPLE TAP



FEATURES

- High quality sampling tap.
- Supplied with male instantaneous coupling to fit to standpipe or tee / y-branch etc.
- Easy to sterilise.
- Screw on cap to protect the outlet.
- Industry standard fitting.

TOOLS AND EQUIPMENT

LISTENING STICK 2 PIECE



FEATURES

- High quality robust listening stick for reliable leak detection.
- Manufactured to the highest standard using quality materials.
- Plastic ear piece improves the listening quality.

DIAMETER PIPE CALIPERS



FEATURES

- Firm joint OD calipers.
- Strong and light weight.
- Sizes up to 1250mm available.

STANDPIPE WITH DCV



FEATURES

- Double pull outlet
- Double check valve
- Live supply protection.
- Double check valve to prevent back syphoning.

48" METAL VALVE KEY



FEATURES

- Heavy duty valve key.
- Handle stores inside key.
- Tall enough to clear a standpipe.

MAGFLOW METER



FEATURES

- Displays flow rate and total.
- Battery powered.
- Accurate flow measurement even at low flows.

STANDPIPE FLOWMETER



FEATURES

- Analogue display in litres per minute.
- Resettable total.
- 10 to 1,400 litres per minute flow range.
- Aluminium construction.

ANALOGUE FLOWMETER



FEATURES

- Analogue display in litres per minute.
- Resettable total.
- 10 to 1,400 litres per minute flow range.
- Can be fitted to standpipe elbow or used in line with hoses.

VALVE STEM REDUCER

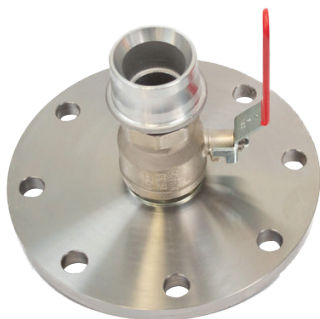


FEATURES

- Jumbo Valve Stem Reducer 48mm Female x 35mm Male.
- Simply bolt on and operate.

FITTINGS

TEST FLANGES 50 TO 300mm



FEATURES

- Stainless steel flange
- Dowty washer sealed
- Male instantaneous Coupler
- Central 2" BSP ball valve
- 24 bar test rated

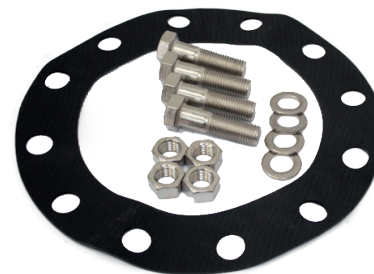
TEST FLANGES 350 TO 700mm



FEATURES

- Assembled Test Flange.
- Central 2" BSP ball valve with male instantaneous coupler.
- 3/4" bleed valve.
- Male Instantaneous coupler.
- 16 bar nominal rated.

FLANGE SETS



FEATURES

- Full face gaskets.
- All length bolts available.
- SS, Galv or coated bolts.
- PN16 and PN25.

SWEPT INST TEE



FEATURES

- Instantaneous couplings.
- Fits directly to standpipe with two outlets.
- Supplied with caps.
- Female outlets.
- Male Inlet.

DOUBLE MALE



FEATURES

- Instantaneous coupler.
- Fire Hose fitting.
- Double Male adaptor.
- Machined aluminium.

MALE INST FEM BSP



FEATURES

- Male instantaneous coupler.
- Female BSP thread 2" to ½".
- Rubber sealing gasket.
- Hex tightening.

APP AND SERVER BASED QUALITY CONTROL SYSTEM

Piped is our new industry leading pipeline data management App, designed for use with smartphone or tablet.

Using Piped App, the whole of the pipeline commissioning process is recorded on site using a smartphone or tablet with a clear and easy to use interface.

← Back	Process Details	+
Technician	Glyn Owen	>
Vehicle	Transit MVB (H2O ECS)	>
Installation Technique	Open Cut	>
Client	Army	>
Scheme Name	Burley Trunk Mains Renewals	>
Address	672 Brunshaw Road, Burnley, BB10 4HP	>
Pipe Type	PE SDR 11	>
Pipe Length (metres)	470	>
Pipe Diameter (mm)	930	>
Notes	(none)	>

← Back	Tasks
EXCEL-PROCESS-4003	
Surveying	>
Swabbing	>
Filling Only	>
Pressure Testing PE	>
Pressure Testing DI	>
Chlorination	>
Dechlorination	>
Flushing	>
Flushing 2	>
Sampling	>

HOW DOES PIPED WORK?

Record on site & view online

Piped App lets you undertake the following tasks, and record the data direct from your smartphone

- **Surveying**
- **Swabbing**
- **Filling**
- **Pressure Testing PE**
- **Pressure Testing DI**
- **Chlorination**
- **Dechlorination**
- **Flushing**
- **Sampling**



TASK BASED OPERATION USING SIMPLE NAVIGATION

Choosing your onsite task is easy, a simple click on the process you want to carry out and the App guides you through the job in a simple step by step guide.

Our App is built by pipe commissioning engineers for pipe commissioning engineers so we know the process inside out.

The App is simple and easy to use, but gives the peace of mind that everything is logged, stored and backed up, even when you leave site. The site process checklist is dead.

Welcome to the new era in pipe commissioning.

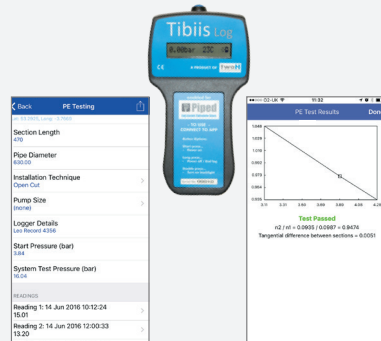
PRESSURE TESTING

Calculate PE pressure test results directly from your smartphone.

PE and DI pressure test certificates are generated automatically.

The Piped App automatically sends out alerts if tests or samples fail.

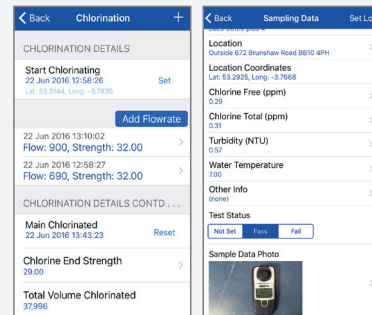
The pass fail notification can be sent to multiple locations including main contractors and pipe installers at the same time.



- **Complete traceability**
- **Record photos including GPS location**
- **Real time remote viewing**

Images taken via your smartphone or tablet are included in the report data.

The app links processes and tasks to the GPS location of the process carried out.



INTUITIVE NAVIGATION

Our intuitive user interface is clear and easy to use.

Piped App has been designed with large easy to operate functions for field operations.

All information entered into the mobile device is presented in a clear and easy to read format.



The App is designed to be operated with the minimum amount of training and instruction. Full training is available. Step up to the new way to record and commission pipework, reduce errors, increase traceability and create a long time record that proves the quality of your work.

TRAINING

PIPELINE COMMISSIONING TRAINING

twoH are an EUSR Approved Provider and our Two Day Pipeline Commissioning Technician Training Course has EUSR approval – successful candidates receive a qualification card issued by the EUSR.

Our course has been produced by experienced Water Industry professionals with in-depth knowledge of both theoretical and practical aspects of pipeline commissioning. Courses can be tailored towards site technicians, supervisors, managers, designers etc – or any combination. There is an assessment at the end of each day to test the individuals' understanding as well as practical assessments during the course.

For more information or to book a course, please contact us.

The pressure testing procedures are in accordance with IGN 4 1 03 which is referred to in CESWI 7th and are the procedures adapted commonly throughout the UK.

100% of candidates would recommend our course to an associate - find out



EUSR NATIONAL WATER HYGIENE CARD TRAINING

Essential for those working on restricted operations.



Train with twoH



SPECIALIST SERVICES

ExcelCS
Specialist Contract Services

The complete pipework commissioning experts

- Pressure Testing
- Chlorination
- Commissioning Plans
- EUSR Approved Training



Quality control solution for pipelines

ON SITE with Smartphone or tablet
IN THE OFFICE on pipedapp.com
TRAINING & DATA ANALYSIS
CALL 08450 233373 for more info

Post weld pressure testing made easy with **ExcelCS**

WORKING CLOSELY WITH

► **ADVANCE**
► **WELDING**

Manufacturers of Electrofusion Welding Equipment



www.advancewelding.co.uk

Tel: 01274 870112

TWOH



Telephone

08450 230364

Email

sales@twoh.net

Website

www.twoH.net

Address

**twoH
Unit 1, Mochdre Business Parc
Station Road, Mochdre
Colwyn Bay, Conwy LL28 5EF
United Kingdom**

PIPED



Telephone

08450 233373

Email

enquiries@pipedapp.com

Website

www.pipedapp.com

Address

**PipedApp
Unit 1, Mochdre Business Parc
Station Road, Mochdre
Colwyn Bay, Conwy LL28 5EF
United Kingdom**

NOTES



For people who commission pipelines – by people who commission pipelines

Telephone

08450 230364

Email

sales@twoh.net

Website

www.twoH.net

Address

twoH
Unit 1, Mochdre Business Parc
Station Road, Mochdre
Colwyn Bay, Conwy LL28 5EF
United Kingdom